

1 2 3 4 5 6

A

A

5/8-11 THREAD x 1-1/8 DEEP
C'BORE DIA .642 x .300 DEEP

Ø 1.75

Ø 2.50

Ø 1.60

SK16-HT14 COLLET NUT

.645

2.70

0

.125

.75

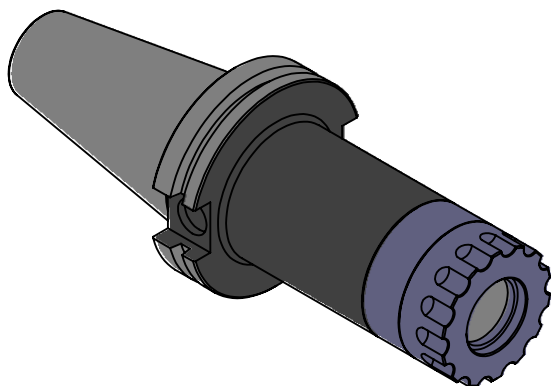
4.00

B

B

C

C



D

D

NOTES:
WORKS ON ALL CAT40 MACHINES
TAKES ALL SK16-HT14 COLLETS FROM .09"-.630"
USES WRENCH PART # HT14-TWA TORQUE WRENCH (NOT INCLUDED)
FOR MORE PRODUCT DETAILS PLEASE GO TO MARITOO.COM
AND SEARCH ITEM # LISTED ON THIS PRINT

MARITOO

WWW.MARITOO.COM

ITEM# **CAT40 SK16-4.0-HT**

Made in USA

1 2 3 4 5 6